

Video, Full Resolution Online, Apple® iPad®* and Interactive Case Study Formats

MAMMOGRAPHY and PET/CT EDUCATION SERIES

Earn 3 to 43 Hours Category I CME in Mammography

Choose Individual Short Courses or Combine Programs in this series for MQSA and ACR

Breast Diagnosis and Biopsy The Ultrasound Approach

Earn up to 3 Hours AMA PRA Category I CME

Digital Mammography

Earn up to 8 Hours AMA PRA Category I CME

Breast Update

Earn Up to 8 Hours AMA PRA Category I CME

Mammography "Practice Based Education"™

Interactive Case Study

Earn Up to 18 Hours AMA PRA Category I CME

Breast MRI

Earn Up to 6 Hours AMA PRA Category I CME

Earn up 15 Hours Category I CME in PET/CT

PET CT Oncology: Practice Based Education



Prepare for MQSA and ACR
Choose individual Short Topics or any combination.



Program Committee Efficiency Learning Systems

www.Effsystems.com, cme@effsystems.com, (800) 891-4330

Academic Sponsors:

USF Health

and the H. Lee Moffitt Cancer Research Institute and Others



Breast Update

- AMA PRA Category 1 Credit(s)[™]: 8
- You control the pace of study.
- Video CD, Apple® iPad®, and Full Resolution Online Versions Available
- Studio enhanced, high quality lectures with pointers and animations
- Conventional Mammography CME Credit
- For latest versions call 800 891 4330 or visit us online www.effsystems.com

Video Didactic Lectures
 AMA PRA Category 1 Credit(s)[™]: 8
 MQSA and ACR compliance
Sponsored by:
USF Health and the
H. Lee Moffitt Cancer Research Institute

Breast Imaging experts present clinical experience and case examples for high quality multimodality breast diagnosis and management. Preview and Online Information : <http://www.effsystems.com/>

Presented in complete, high quality, studio enhanced, didactic lectures with animations and pointers to enhance the learning experience.

Video Contents:

- “Imaging Techniques in Carcinoma-in-Situ” Brem
- “Core Biopsy Tricks of the Trade” Ultrasound, MRI, and Stereotaxis. Cressman
- “Challenging Needle Localization” Aguila
- “Genetic Profiling and Chemotherapy” Kemp
- “Ductography, Ductal Lavage, & Mammary Ductoscopy” Aguila
- “Breast Specific Gamma Imaging (BSGI)” Brem
- “Imaging the Surgically Altered Breast” Cressman
- “Quality Assurance in Screen/Film Mammography (With Digital Mammography Footnotes)” Thomas
- “Imaging Implants with MRI” Szabunio
- “The Male Breast” Cressman
- “Imaging the Dense Breast” AND “Interesting Cases Presentation” Chau

Syllabus, Teaching Test, Critique, and CME Attestation

This program is supported by the dedication and expertise of our USF College of Medicine and Distinguished Guest faculty members.

Faculty

Sadie J. Aguila, M.D. Assistant Professor of Radiology USF College of Medicine H. Lee Moffitt Cancer Center & Research Institute	Rachel F. Brem, MD Director, Breast Imaging and Intervention The George Washington University Washington, DC	Alec Chau, M.D. Assistant Professor of Radiology USF College of Medicine H. Lee Moffitt Cancer Center & Research Institute	Jody Cressman, M.D. Assistant Professor of Radiology USF College of Medicine H. Lee Moffitt Cancer Center & Research Institute
Kamy R. Kemp, MD Breast Surgeon and Certified Mammographer Breast Care Center of Florida Winter Park, Florida	Margaret Szabunio M.D. Assistant Professor of Radiology USF College of Medicine H. Lee Moffitt Cancer Center & Research Institute	Jerry A. Thomas, M.S., FAAPM, DABR, Radiological Physicist Via Christi Regional Medical Center Wichita, Kansas	

Educational Objectives

Establish an approach to breast diagnosis using mammography, and new modalities in breast imaging. Describe the evaluation and biopsy of breast lesions using image guidance. Establish an approach to breast diagnosis using mammography, ultrasound, and new modalities in breast imaging. Define the utility of nuclear medicine techniques in guiding surgical procedures and for diagnosis and staging. Analyze technique from a variety of practices.

Physician Accreditation:

This activity has been planned and implemented in accordance with the Essential Areas and policies of the Accreditation Council for Continuing Medical Education through the joint sponsorship of USF Health and H. Lee Moffitt Cancer Center and Research Institute. USF Health is accredited by the ACCME to provide continuing medical education for physicians.

USF Health designates this enduring material for a maximum of 8 AMA PRA Category 1 Credits. Physicians should claim only the credit commensurate with the extent of their participation in the activity.

Choose Individual Short Courses or Combine Programs in this series for MQSA and ACR.

For latest versions visit us online www.effsystems.com or call 800 891 4330

Breast MRI

Video Didactic Lectures

AMA PRA Category 1 Credit(s)[™]: 6

MQSA and ACR compliance

Sponsored by:

USF Health and the

H. Lee Moffitt Cancer Research Institute

- ❖ AMA PRA Category 1 Credit(s)[™]: 6 in Breast MRI.
- ❖ You control the pace of study.
- ❖ Video CD, Apple® iPad®, and Full Resolution Online Versions Available
- ❖ Studio enhanced, high quality lectures with pointers and animations.
- ❖ For latest versions call 800 891 4330 or visit us online www.effsystems.com

Experts in Breast MRI present clinical experience and practical case examples. Presented in complete, high quality, studio enhanced, didactic lectures with animations and pointers to enhance the learning experience. **Preview on Video CD or Online: <http://www.effsystems.com/breast-mri/index.html>**

Video Contents:

“Breast MRI: Clinical Indications” Levin: *Screening:* High risk (BRCA1, BRCA2); *Staging:* Pre-op for extent of disease., Post-op evaluation of positive margins. Follow-up of neoadjuvant chemotherapy. Occult Primary. Local recurrence, EVALUATION OF AMBIGUOUS IMAGING OR CLINICAL FINDINGS.

“Breast MRI: Indications” Harms: Characterization, Local Staging, Localization biopsy, Lymphnode disease, Screening

“Interventional Breast MRI: Advances and Biopsies” Harms: Localization, Biopsy, Minimally Invasive Therapy

“Interventional Breast MRI” Levin: Required for performing Breast MRI

“State-of-the-art Breast MRI with Parametric Imaging” Safir: High Risk Screening, Staging, Contralateral examination, After lumpectomy, Lobular carcinoma, Neoadjuvant chemotherapy, Axillary adenopathy unknown primary, postoperative tissue reconstruction, Chest wall invasion, silicone augmentation.

Breast MRI 2010 Update

Syllabus, Teaching Test, Critique, and CME Attestation

Faculty

Steven E. Harms MD

The Breast Center of
Northwest Arkansas and
University of Arkansas for
Medical Sciences

Elsie Levin, M.D.

Director, Faulkner Sagoff
Breast Imaging and
Diagnostic Center
Boston, MA

Julian Safir, MD

Nassau Radiologic Group, PC
Long Island, NY

Educational Objectives

Recognize the MR appearances of breast anatomy and common pathology

Expand clinical applications of breast MRI procedures covered in this program

Selectively utilize MR contrast agents for clinical problem solving

(Audience: Physician participants who meet MQSA basic education requirements need no special preparation for this course.)

Physician Accreditation:

This activity has been planned and implemented in accordance with the Essential Areas and policies of the Accreditation Council for Continuing Medical Education through the joint sponsorship of USF Health and H. Lee Moffitt Cancer Center and Research Institute. USF Health is accredited by the ACCME to provide continuing medical education for physicians.

USF Health designates this enduring material for a maximum of 6 AMA PRA Category 1 Credits. Physicians should claim only the credit commensurate with the extent of their participation in the activity.

[Orders automatically filled with the most recent release.](#)

Choose Individual Short Courses or Combine Programs in this series for MQSA and ACR.

For latest versions visit us online www.effsystems.com or call 800 891 4330

Breast Diagnosis and Biopsy: The Ultrasound Approach

Video Didactic Lectures

AMA PRA Category 1 Credit(s)[™]: 3
MQSA and ACR compliance

Sponsored by:

USF Health and the
H. Lee Moffitt Cancer Research Institute

- ❖ AMA PRA Category 1 Credit(s)[™] : 3 - towards your MQSA and ACR compliance in breast ultrasound, and ultrasound-guided breast biopsy.
- ❖ You control the pace of study.
- ❖ Video CD, Apple® iPad®* and Full Resolution Online Versions Available
- ❖ Studio enhanced, high quality lectures with pointers and animations.
- ❖ For latest versions call 800 891 4330 or visit us online www.effsystems.com

Studio enhanced didactic lectures with animations and pointers to enhance the learning experience.

Preview and Online Information: <http://www.effsystems.com/us/index.html>

Video Contents:

“Breast Sonoelastography” A New Adjunct Technique

“Ultrasound-Guided Core Breast Biopsy”

Indications, Patient Preparation, Biopsy Technique and Needle Placement, Sonographic /
Mammographic Correlation, Vacuum Assisted Biopsy

“Introduction to Automated Screening Breast Ultrasound” Mammography and Ultrasound in the
screening setting.

“Sonographic Examination and Screening”

Equipment / Technique, Anatomy, Indications, BI-RADS Lexicon, Screening ACRIN Protocol

Syllabus, Teaching Test, Critique, and CME Attestation

This program is supported by the dedication and expertise of our USF College of Medicine faculty members.

Faculty

Jody Cressman, M.D.

Assistant Professor of Radiology
H. Lee Moffitt Cancer Center
The University of South Florida

Kevin M. Kelly, MD

Director of Breast Imaging
Hill Breast Center
Huntington Memorial Hospital
Pasadena, California

Margaret Szabunio M.D.

Assistant Professor of Radiology
H. Lee Moffitt Cancer Center
The University of South Florida

Educational Objectives

Describe the evaluation and biopsy of breast lesions using state-of-the-art breast sonography.
Establish an approach to breast diagnosis using mammography and ultrasound in clinical practice.
Gain proficiency with the ACR recommended BI-RADS[™] report terminology and reporting structure with FDA compliant reporting.
Satisfy ACR Breast Ultrasound, and US guided breast biopsy Category I CME Requirements
Recognize proven benign and malignant breast conditions.
(Audience: Physician participants who meet MQSA basic education requirements need no special preparation for this course.)

Physician Accreditation:

This activity has been planned and implemented in accordance with the Essential Areas and policies of the Accreditation Council for Continuing Medical Education through the joint sponsorship of USF Health and H. Lee Moffitt Cancer Center and Research Institute. USF Health is accredited by the ACCME to provide continuing medical education for physicians.

USF Health designates this enduring material for a maximum of 3 AMA PRA Category 1 Credits. Physicians should claim only the credit commensurate with the extent of their participation in the activity.
Orders automatically filled with the most recent release. Every participant receives a complete individual course copy including disk copies..

Choose Individual Short Courses or Combine Programs in this series for MQSA and ACR.

For latest versions visit us online www.effsystems.com or call 800 891 4330

- **AMA PRA Category 1 Credit(s)[™]: 8 in Digital Mammography**
- You control the pace of study.
- Video CD, **Apple® iPad®**, and Full Resolution Online Versions Available
- Studio enhanced, high quality lectures with pointers and animations.
- For latest versions call 800 891 4330 or visit us online www.effsystems.com

Digital Mammography

Video Didactic Lectures

AMA PRA Category 1 Credit(s)[™]: 8
MQSA and ACR compliance

Sponsored by:

USF Health and the
H. Lee Moffitt Cancer Research Institute

Experts in Digital Mammography present topics in this program including: The fundamentals of digital imaging. Clinician considerations and reviews of clinical trials. Discussions of the systems and detector technologies. Radiologists role in quality control processes, procedures, tips, and pitfalls. Archiving and PACS issues. Computer aided detection in breast cancer diagnosis. Advances in breast imaging. (To preview online, visit <http://www.effsystems.com/>)

Video Contents:

Digital Mammography: Clinical Considerations

Digital Image Acquisition & Display

Quality Control Processes in Digital Mammography

Computer Aided Detection in Breast Cancer Diagnosis

Update on Digital Mammography Systems

Advances in Breast Imaging

Syllabus, Teaching Test, Evaluation, and CME Attestation

Presented in complete, high quality, studio enhanced, didactic lectures with animations and pointers to enhance the learning experience.

Earn Cat. I CME : Earn 8 Hours Category I CME credit towards your MQSA compliance. This course is designed to provide initial and ongoing training to radiologists in the use of Full Field Digital Mammography (FFDM) systems and related procedures. The course is intended to meet the requirements of the FDA 21 CFR, 900.12(a) (2) Mammography Quality Standards, Final Rule which states that "Interpreting physicians and mammography technologists who began using the digital system after April 28, 1999 must have 8 hours of initial training in Full Field Digital Mammography (or 6 hours continuing) and be able to supply supporting documentation for the requirements during the annual MQSA inspection."

This program is supported by the dedication and expertise of our USF College of Medicine faculty members.

Faculty

Claudia G. Berman, MD
Professor of Radiology
USF College of Medicine
H. Lee Moffitt Cancer
Center & Research Institute

Rachel F. Brem, MD
Director, Breast Imaging
and Intervention
The George Washington
University
Washington, DC

Maria Kallergi, PhD
Associate Professor of
Radiology
USF College of Medicine
H. Lee Moffitt Cancer
Center & Research
Institute

Jerry Thomas, MS, DABR
Radiological Physicist
Via Christi Regional Medical Center
Wichita, Kansas

Educational Objectives

Interpret digital mammograms.
Implement quality control (QC) procedures to digital systems and their components.
Evaluate digital technology.
Comply with FDA requirements.
(Audience: Physician participants who meet MQSA basic education requirements need no special preparation for this course.)

Physician Accreditation:

This activity has been planned and implemented in accordance with the Essential Areas and policies of the Accreditation Council for Continuing Medical Education through the joint sponsorship of USF Health and H. Lee Moffitt Cancer Center and Research Institute. USF Health is accredited by the ACCME to provide continuing medical education for physicians.
USF Health designates this enduring material for a maximum of 8 *AMA PRA Category 1 Credits*. Physicians should claim only the credit commensurate with the extent of their participation in the activity. *Orders automatically filled with the most recent release. Every participant receives a complete individual course copy including disk copies.*

Choose Individual Short Courses or Combine Programs in this series for MQSA and ACR.

For latest versions visit us online www.effsystems.com or call 800 891 4330

Mammography Practice Based Education® Interactive Case Study

AMA PRA Category 1 Credit(s)™: 18

MQSA and ACR compliance

Sponsored by: USF Health

- ❖ AMA PRA Category 1 Credit(s)™: 18 / MQSA and ACR compliance.
- ❖ Conventional Mammography CME
- ❖ You control the depth of study.
- ❖ Proven Cases by Histology or Long Term Follow-up
- ❖ For latest versions call 800 891 4330 or visit us online www.effsystems.com

“Mammography: Practice Based Education™”, interactive conventional mammography, presents select, full resolution, proven Mammography Cases in our Practice Based Explorer (PBE) interface for PC. Participants have rated PBE highly for image quality, ease of use, and overall educational experience. Participants report new confidence in recognizing breast cancer and its imitators.

Instant Feedback :

Formulate your opinion and anonymously compare your diagnosis with:

Faculty BI-RADS Report

Discussion

Histology or Follow-up Proven Final Diagnosis

Graphic Regions of Interest

You Control the Depth of Study:

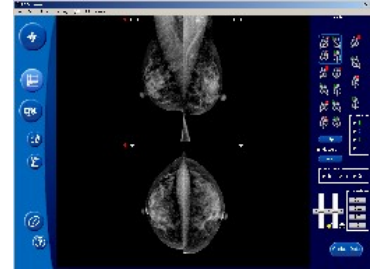
Smart links throughout, to reinforce your learning experience include:

ACR—BI-RADS™ compliant descriptors, extensive glossary definitions, and actual image examples of findings

Earn Cat. I CME: Earn 6, 8, 12, 15, or 18 Hours Category I CME credit towards your MQSA compliance.

User Friendly: Mouse and Menu Driven. Effortlessly navigate proven full resolution mammograms with full study information and full image control.

For complete information, and demonstration, insert the DVD ROM and click demonstration or online <http://www.effsystems.com/mammography/>



This program is supported by the dedication and expertise of our USF College of Medicine faculty members.

Faculty

John Beauchamp M.D.

Associate Professor of Radiology
USF College of Medicine
H. Lee Moffitt Cancer Center &
Research Institute

Edward A. Eikman M.D.

Program Chairman
Associate Professor of Radiology
USF College of Medicine
H. Lee Moffitt Cancer Center & Research Institute

Margaret Szabunio M.D.

Assistant Professor of Radiology
USF College of Medicine
H. Lee Moffitt Cancer Center & Research
Institute

Educational Objectives

The interactive DVD-ROM includes current applications of screening mammography including benign and suspect calcifications, benign, indeterminate, and suspicious masses, special cases and associated findings. Plus these additional learning features:

Gain proficiency with the ACR recommended BI-RADS™ report terminology and reporting structure with FDA compliant reporting.

Learn to recognize case specific tailoring of supplemental exams to clarify indeterminate screening

Compare your readings with the over reader and faculty commentator for each case.

Recognize proven benign and malignant breast conditions.

Analyze technique from a variety of practices

Physician Accreditation:

USF Health is accredited by the Accreditation Council for Continuing Medical Education to provide continuing medical education for physicians.

USF Health designates this enduring material for a maximum of 18 AMA PRA Category 1 Credit(s)™. Physicians should claim only the credit commensurate with the extent of their participation in the activity.

Prices and program content are subject to change without notice. The program committee or the Continuing Medical Education Office at USF Health reserves the right to cancel this program for any reason whatsoever. Orders automatically filled with the most recent release version. Every participant receives a complete individual course copy including disk copies..

Choose Individual Short Courses or Combine Programs in this series for MQSA and ACR.

For latest versions visit us online www.effsystems.com or call 800 891 4330

PET CT Oncology

Didactic Lectures and Interactive Case Study

AMA PRA Category 1 Credit(s)[™]: 15 in PET CT
Prepare for ACR.

Sponsored by: USF Health

Gain Authentic Reading Experience in PET CT

Nationally recognized experts in PET CT and nuclear medicine present clinical experience and practical case examples. This program combines studio mastered didactic lecture, including presentations of interactive cases, AND hands on interactive cases.

DISK 1: Video Contents

"FDG PET CT: Standard Uptake Values (SUVs), and Comparative Activity Ratios (CARs)" Scott H Britz-Cunningham, MD, PhD Techniques for improving accuracy and consistency in PET reporting.

"Genotype to Phenotype to Treatment" Henry Wagner MD

"Detection of Infection and Inflammation with FDG-PET Imaging" Abass Alavi, MD

"PET CT Oncology, Esophagus" Edward Eikman MD

"PET CT Oncology, Head and Neck" Edward Eikman MD

"Cerebrovascular Scintigraphy" Scott H Britz-Cunningham, MD, PhD

"New Directions for PET/CT" Richard J. Campeau, MD

Studio
Mastered
Lectures

Syllabus, Teaching Test, Critique, and CME Attestation

DISK 2: Hands on Interactive Case Study "Practice Based Education" [™]

Using a unique fast, interactive, digital display that simulates a full function PET/CT fusion display, study full body PET CT cases and anonymously compare your opinion with the original clinical report, a standardized report available follow-up, and faculty discussion. "Practice Based Education"[®]

See Reverse for Educational objectives and Accreditation Information.

Complete information online <http://www.effsystems.com/pet-ct-oncology/>

Faculty

Naomi P. Alazraki, MD
Professor & Co-Director
Division of Nuclear Medicine
Emory University School of
Medicine
Chief, Nuclear Medicine
VA Medical Center - Atlanta

Bennett Chin, MD
Assistant Professor of
Nuclear Medicine
Duke University Medical
Center

Edward A. Eikman, MD
FACR, FACNP
(Program Chairman)
Associate Professor of
Radiology University of South
Florida H. Lee Moffitt Cancer
Center and Research Institute

Henry N. Wagner, Jr., M.D.
Professor Emeritus of
Radiology & Medicine
John Hopkins School of
Medicine

**Scott H Britz-
Cunningham, MD, PhD**
Dept. of Radiology,
Brigham & Women's
Hospital, Boston
Harvard Medical School

Richard J Campeau, MD
FACNM, FACNP

Abass Alavi, MD
Hospital of the
University of
Pennsylvania

Educational Objectives The PET/CT Oncology: Practice Based Education™ interactive CD-ROM provides a rich learning environment, which allows you to: Review region-specific and general background information related to biological behavior of cancer as assessed by positron emission tomography.
Formulate observations and reports of specific patient studies that reflect an evolving standard for communication with oncologists. Compare observations and lexicon use with original clinical reports and a standardized, TNM-relatable expert over-read report.
Analyze cases and outcomes in clinical context with integration of clinical information and expert commentary.
Recognize technical, physiologic, and benign disease issues in PET imaging that may affect diagnostic accuracy.

Physician Accreditation: USF Health is accredited by the Accreditation Council for Continuing Medical Education to provide continuing medical education for physicians.

USF Health designates this enduring material for a maximum of 15 AMA PRA Category 1 Credit(s)™. Physicians should claim only the credit commensurate with the extent of their participation in the activity.

Every participant receives a complete individual course copy including disk copies. Orders automatically filled with the most recent release version.

For latest versions visit us online www.effsystems.com or call 800 891 4330

- ❖ AMA PRA Category 1 Credit(s)™: 15 in PET CT.
- ❖ You control the pace of study.
- ❖ Full Resolution Video CD and Hands on Interactive Case Study
- ❖ For latest versions call 800 891 4330 or visit us online www.effsystems.com