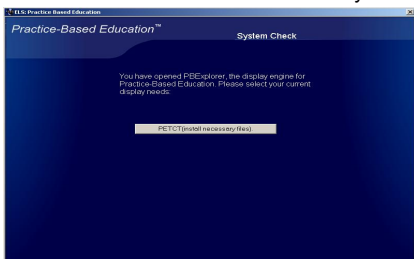


DISK 2 INSTALLATION INSTRUCTIONS - PET / CT Oncology Practice Based Education Practice Based-Education CD/ROM

SOFTWARE INSTALLATION:

1. Install Practice Based Education software as follows:
 - a. Close down all other software applications.
 - b. Insert the CD (Disk 1) into your computer's CD-COM drive. In most computers the software will auto-boot. If it does, proceed to Step 2 below. ---If it does not, follow these steps:
 - c. Double-click the My Computer Icon.
 - d. Double-click on the icon for the CD drive containing the Practice Based Education software disc.
 - e. Double-click on the Start.hta file.
2. The Practice Based Education "System Check" is now displayed.



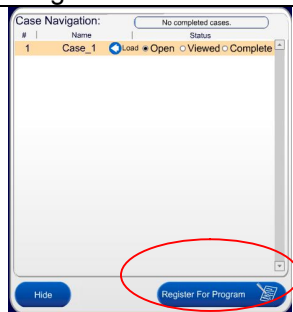
3. Click "PETCT (install necessary files)"
4. The license agreement screen is displayed. After reading it, press "I accept" .. to continue or "I do not accept...." to leave the program.
5. We highly recommend viewing the 5 minute demonstration movie. CLICK DEMO FROM THE "Introduction" screen (Note: You may need to click Demo more than once on some systems.)
8. If requested, re-boot your computer before you proceed. (Reboot is unlikely necessary.)

DISK 2 - UNLOCK INTERACTIVE CASES: -----MAKE CERTAIN THAT THE CD IS IN THE CD DRIVE!!!

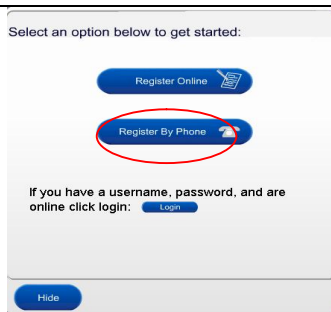
1.
Click Start



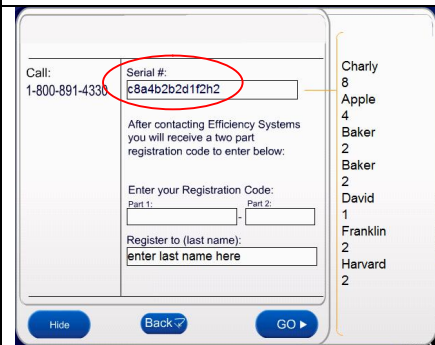
2.
Click Register for Program



3.
Click Register by Phone
This will produce a serial number



4.
Call 800 891 4330 or email effsystems@gmail.com your serial number or obtain your registration code.



Register by phone. After installation, and program launch, Click "Start", Click "Register for Program", Click "Register by Phone". This will produce a serial number. Call 800-891-4330 or email effsystems@gmail.com for a release code. We will need the serial number to produce the return code.

Attestation and Critique Locations: See Disk Case. You will need to return by Fax (813) 258-4146 or mail the Critique and Attestation

Workflow Demonstration:

On "Introduction" screen: Button Labeled: "Demo" We highly recommend viewing the demonstration animation to gain familiarity with the program features. Thank you for your participation. Give us a call with any questions. 800-891-4330 Program Committee.

System Requirements:

Minimum system requirements. Here's what you need in order to successfully use the Practice Based Education software:

- 750 MHz Pentium III or faster processor , 256 MB or greater RAM (512 MB recommended) , Video display capable of 1024 x 768 pixels, Free hard drive space of at least 40 MB **Recommended Screen Resolution: 1024x768**
- If your PC does not have at least these minimum system requirements, system performance will more than likely not be acceptable.

Operating System: Windows PC: Windows 98, Windows 2000, Windows NT (with MS service pack 6), or Windows XP (Preferred) (Windows is a trade mark of the Microsoft Corporation)